

Medical Suite For Day Time Surgery or General

4100 West 15th Street, Suite 200
Plano, TX

For Lease



Location: Located at 4100 15th Street in Plano just West of Coit Road. Suite is in medical office building with other medical users.

Amenities: Over parked for medical. Very close to both Baylor Plano and Plano Presbyterian Hospitals and Plano Medical Center. Numerous physicians in building for referral potential.

Space: Suite is 3400 RSF and available now for lease or for sale as a condo. Nice size lobby for busy practice. Ample recovery area.

Parking: Building is adequately parked for medical users.

Signage: Suite comes with both lobby and signage on the new large monument sign.

Rate: Please call.

Contact: 972-308-0056
Tim Ward, Broker

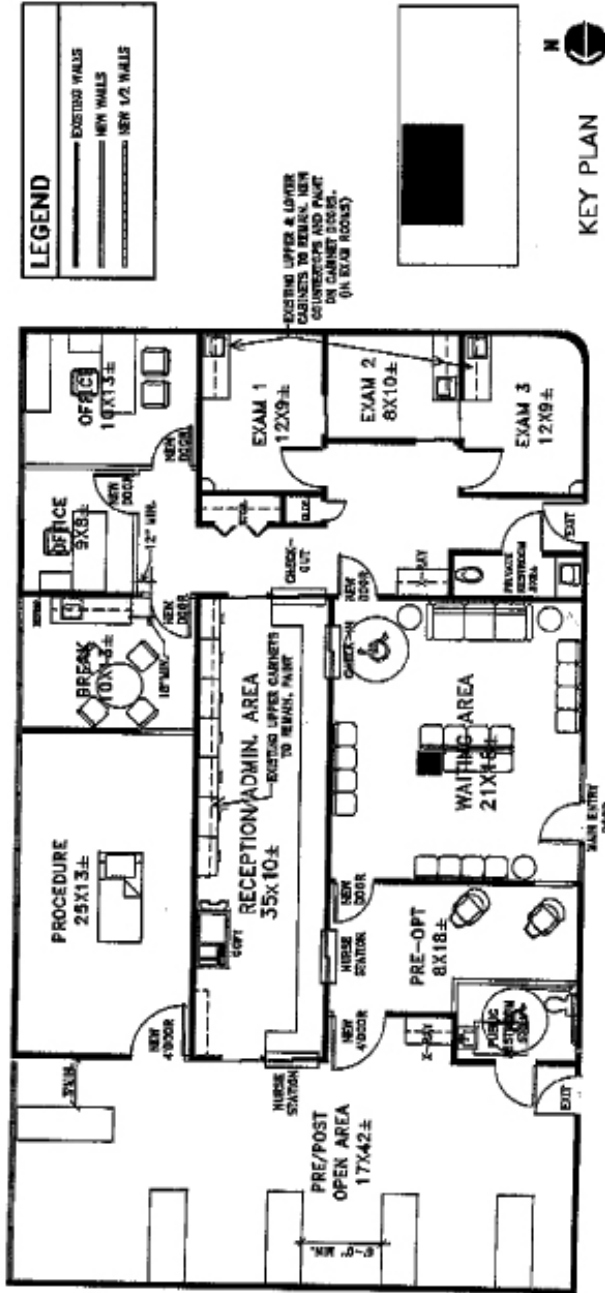
The information contained herein is deemed accurate; however, it is subject to change, availability or withdrawal from the market. No representations or warranties are being made or implied. Please visit SearchCommercial.com to view the details of this and many other HealthCare & Professional properties.

SearchCommercial.com

HealthCare and Office - Sales, Leasing & Development

4100 West 15th Street, Suite 200
Plano, TX

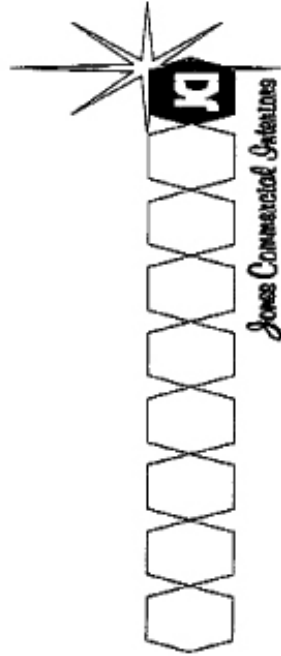
PRELIMINARY PLAN
NOT FOR CONSTRUCTION



SPACE PLAN 1

TENANT: _____ SUITE: 200
 BUILDING: 4100 W.15TH STREET
 SCALE: NOT TO SCALE SF: 3,400
 DATE: 12-07-2005
 FILE: DRAWINGS/MEGELL/PAULSCH/HEILMAN/P/11/11/05/PLANS/PLANO-SF1

5646 MILTON SUITE 321 DALLAS TEXAS 75206 972-690-3400 FAX 972-690-4122



Jones Commercial Services